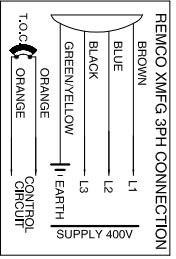
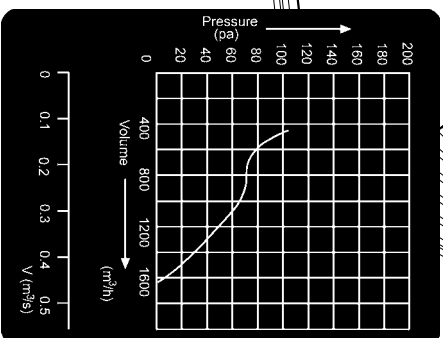


6 CORE CABLE EXTENDS 600mm BROWN, BLACK, BLUE, 2x ORANGE & EARTH SLEEVED 550mm & ENDS STRIPPED BACK 10mm

ALL DIMENSIONS IN mm UNLESS OTHERWISE STATED



Model No	Voltage (V)	Freq. (Hz)	Air Direction	Air Volume (m ³ /h)	Speed (min)	Input (W)	Current (A)	Capacitor supplied	Noise (dBA)	Max. amb. (°C)
XMF-G-4-85-300-30S-3P	400	50	S	1650	1340	85	0.30	---	62	45



DRG.	PART NO.	filename as	DO NOT SCALE
J.SOMERVILLE		below	
CHKD BY	APPROVED BY	DATE	ISSUE
REMC O PRODUCTS LIMITED		10-01-05	1.0
	XMF-G-4-85-300-30S-3P		1/1
			SHEET