



# ENAPART



93 S Railroad Avenue Unit C  
Bergenfield NJ 07621 USA  
[www.enapart.com](http://www.enapart.com)  
[sales@enapart.com](mailto:sales@enapart.com)



Via del Canneto 35,  
Borgosatollo, Brescia - Italia  
[www.enapart.it](http://www.enapart.it)  
[vendite@enapart.it](mailto:vendite@enapart.it)



Barbaros Mah. Ihlamur Bul. Aĝaoĝlu  
My Newwork No:3/15 Ataşehir / İstanbul  
[www.enapart.net](http://www.enapart.net)  
[satis@enapart.net](mailto:satis@enapart.net)



PRIVADA 10 B SUR #3908 COL.  
ANZUREZ, C.P. 72530, PUEBLA, PUE  
[www.enapart.com.mx](http://www.enapart.com.mx)  
[sales@enapart.com.mx](mailto:sales@enapart.com.mx)



Friedrich-Ebert-Anlage 36, 60325  
Frankfurt am Main, Germany  
[www.enapart.de](http://www.enapart.de)  
[anfrage@enapart.de](mailto:anfrage@enapart.de)



4 boulevard Carnot, 95400  
villiers-le-bel, Paris, France  
[www.enapart.fr](http://www.enapart.fr)  
[sales@enapart.fr](mailto:sales@enapart.fr)



65049, ОДЕСА, ВУЛИЦЯ ІВАНА  
ФРАНКА, БУДИНОК 55, ПОВЕРХ 3  
[www.enapart.com.ua](http://www.enapart.com.ua)  
[sales@enapart.com.ua](mailto:sales@enapart.com.ua)



MUNICIPIUL BUCUREȘTI, SECTOR 3,  
B-DUL BASARABIA, NR.250, CORP P+5  
[www.enapart.ro](http://www.enapart.ro)  
[sales@enapart.ro](mailto:sales@enapart.ro)



〒584-0023 大阪府富田林市若松町  
東2丁目2番16号  
[www.enapart.co.jp](http://www.enapart.co.jp)  
[sales@enapart.co.jp](mailto:sales@enapart.co.jp)



PLAZA NUESTRA SEÑORA DE LAS  
NIEVES 12 ,LOCAL ,50012,ZARAGOZA  
[www.enapart.es](http://www.enapart.es)  
[ventas@enapart.es](mailto:ventas@enapart.es)



Складова база „Онгъл“, Склад А2, п.к.  
4006, гр. Пловдив, България  
[www.enapart.bg](http://www.enapart.bg)  
[sales@enapart.bg](mailto:sales@enapart.bg)



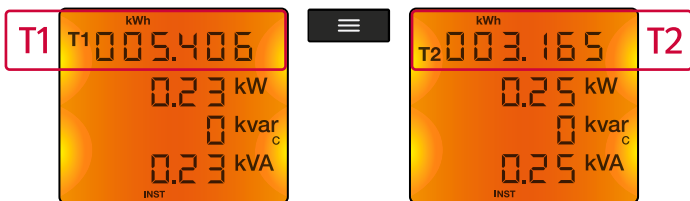
3 Austin Mews, High Street, Hemel  
Hempstead, HP1 3AF , United Kingdom  
[www.enapart.co.uk](http://www.enapart.co.uk)  
[sales@enapart.co.uk](mailto:sales@enapart.co.uk)



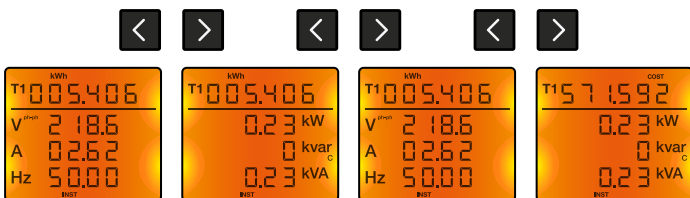


# Screen Data System

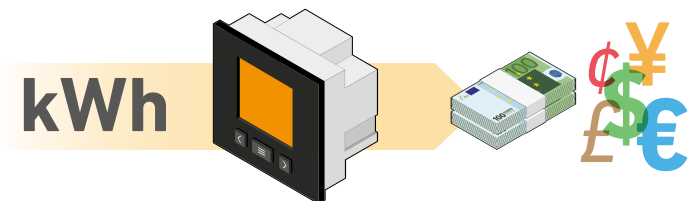
Quick monitoring parameters with a single button.



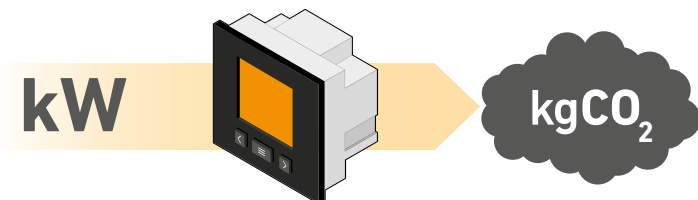
Shows clearly the **basic parameters** of an electrical installation.



Displays **cost of energy consumption** by configuring the kWh cost ratio.



Displays **KgCO<sub>2</sub> indicator** in consumption/generation according to the energy nature, using the ratio established of the energy mix in the country.



# Technical features

<b>Power-Supply</b>	Voltage supply	85-265 V <sub>ac</sub> / 50...60 Hz 95-300 V <sub>dc</sub>
<b>Measure</b>	Voltage	300 V <sub>ac ph-n</sub> / 520 V <sub>ac ph-ph</sub> 50...60 Hz
	Current	... /5 A & /1 A <b>MC:</b> ... /250 mA
	Sampling rate	64 samples/cycle
<b>Accuracy</b>	V, I, Power	0,5%
	Energy	1%
<b>Output</b>	1 built-in digital output	S0 interface Configurable up to 1000 impulses by kWh, kVarh, etc. (24 V <sub>dc</sub> max, 50 mA, 5 imp/s, Max T <sub>on</sub> /T <sub>off</sub> (configurable))
<b>Input</b>	1 built-in digital input	Tariff selection NPN, optoinsulated
<b>Safety</b>	Protection Degree	Frontal protection: IP 51 Terminals: IP 20
		Class III category / <b>EN 61010</b> Double-insulated electric shock protection class II
<b>Standards</b>	<b>IEC 664, VDE 0110, UL 94, IEC 801, IEC 348, IEC 571-1, EN 61000-6-3, EN 61000-6-1, EN 61010-1, CE, according to UL</b>	

# References

Type	Code	Current input	Input	Output
<b>CVM-C5-IC</b>	<b>M55853</b>	... /5 A and /1 A	1	1
<b>CVM-C5-MC-IC</b>	<b>M55873</b>	/250 mA	1	1

**www.circuitor.com**

CIRCUTOR, SA - Vial Sant Jordi, s/n  
08232 Viladecavalls (Barcelona) Spain  
Tel. (+34) 93 745 29 00  
central@circuitor.es



@circuitor



youtube.com/circuitoroficial



circuitor

