



## 3-130 Rod Latch FS PrC



### Vorteile

- For cutout C.
- For application within the sealed area.
- The latch can be combined with escutcheon, handles or swinghandl.
- RH / LH application through double symmetry.
- Grounding by grounding clip (optional).

### Werkstoffe

- **Housing:** zinc die, untreated or PA, black
- **Pinion:** zinc die
- **Rods:** steel, zinc plated

### Anmerkungen

1. stroke 24mm
2. length L
3. clearance

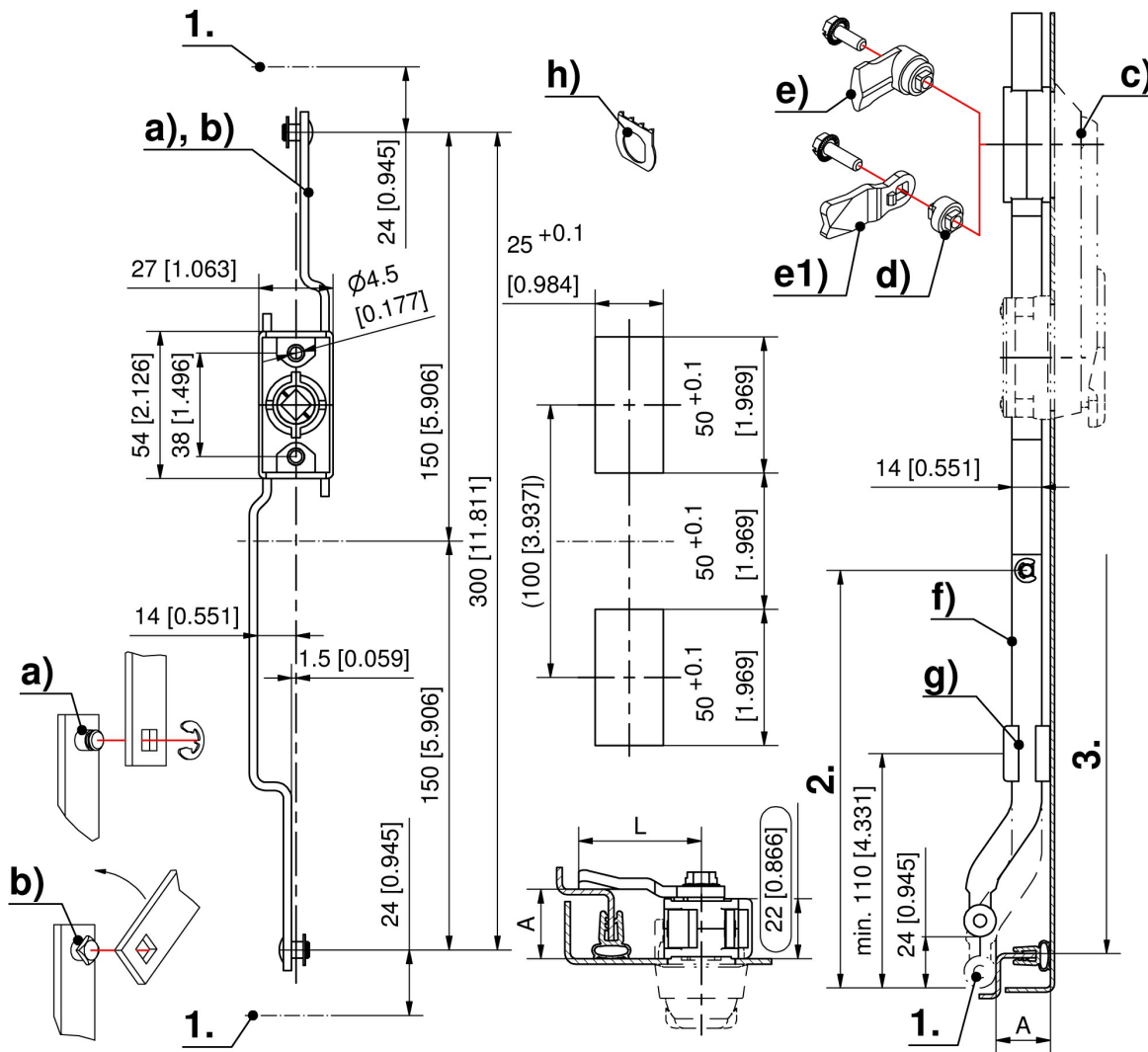


## Rod latch

	Part Number	Material	Rod fastening	Installation type	Delivery Unit
a)	208-9002.00-00000	zinc die	C-clip	screw-on	1 pc.
a)	208-9052.00-00000	PA	C-clip	screw-on	1 pc.
b)	208-9003.00-00000	zinc die	quick-fit	screw-on	1 pc.
b)	208-9053.00-00000	PA	quick-fit	screw-on	1 pc.

\* Accessories

- c) 3-101 **Escutcheons and Inserts**
- c) 3-135 **Escutcheon for Rod Latch PrA**
- c) 3-140 **Handles for Rod Latch FS PrC**
- c) 3-150 **Swinghandle FS PrC for PHZ**
- c) 3-155.02 **Swinghandle SOFTLINE FS PrC**
- d) 3-163 **Cam Adapter Zinc Die**
- e) 208-9401.00-00000 **Cam with square, A25, L30 with serrated screw M6x16**
- e) 208-9402.00-00000 **Cam with square, A20, L40 with serrated screw M6x16**
- e) 208-9404.00-00000 **Cam with square, A18, L40 with serrated screw M6x16**
- e) 208-9408.00-00000 **Cam with square, A30, L30 with serrated screw M6x16**
- e1) 1-102 **Cams L35/45 Steel**
- f) 3-160 **Flat Rod FS with Rollers**
- f) 3-162 **Ramp-Shoe for Flat Rod**
- g) 3-910 **Rod Guide FS 23mm**
- g) 3-911 **Rod Guide FS 23mm**
- h) 3-011 **Grounding Clip Stainless Steel**



Formula for rods:  
cutout in the door center

Rod Latch System in

$$L \mathbf{2.} = \frac{\text{clearance} \mathbf{3.} - 10\text{mm [0.394] (tolerance)} - \text{retraced condition } 300\text{mm [11.811]}}{2 [0.079]}$$